

Hydraulic Brusselle Winch

TTR Code no.: 11.031

Specifications

Make: Brusselle
Type: MO 15/1S-1
Line pull: 150 kN @ 1st layer
Line speed: 12 m/min @ 1st layer

Drum size

Drum dia: 521 mm
Drum length: 340 + 530 mm
Flange dia: 1300 mm
Wire capacity: 20 mtr 2 layers / 140 mtr 6 layers

Drive

Hydraulic motor: Staffa HMC 045
Type: IS/45/15/FM3 ICHP/72/PL 37
Brake unit: Ortlinghaus Type: 0-022-509-55-002-108

Dimensions

Dimensions o.a.: 1670 x 2280 x 1560 mm (LxWxH)
Dimensions base: 1850 x 1500 mm (LxW)

General

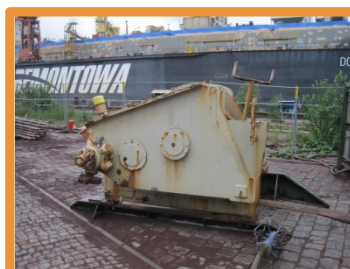
Manual operated band brake and clutch

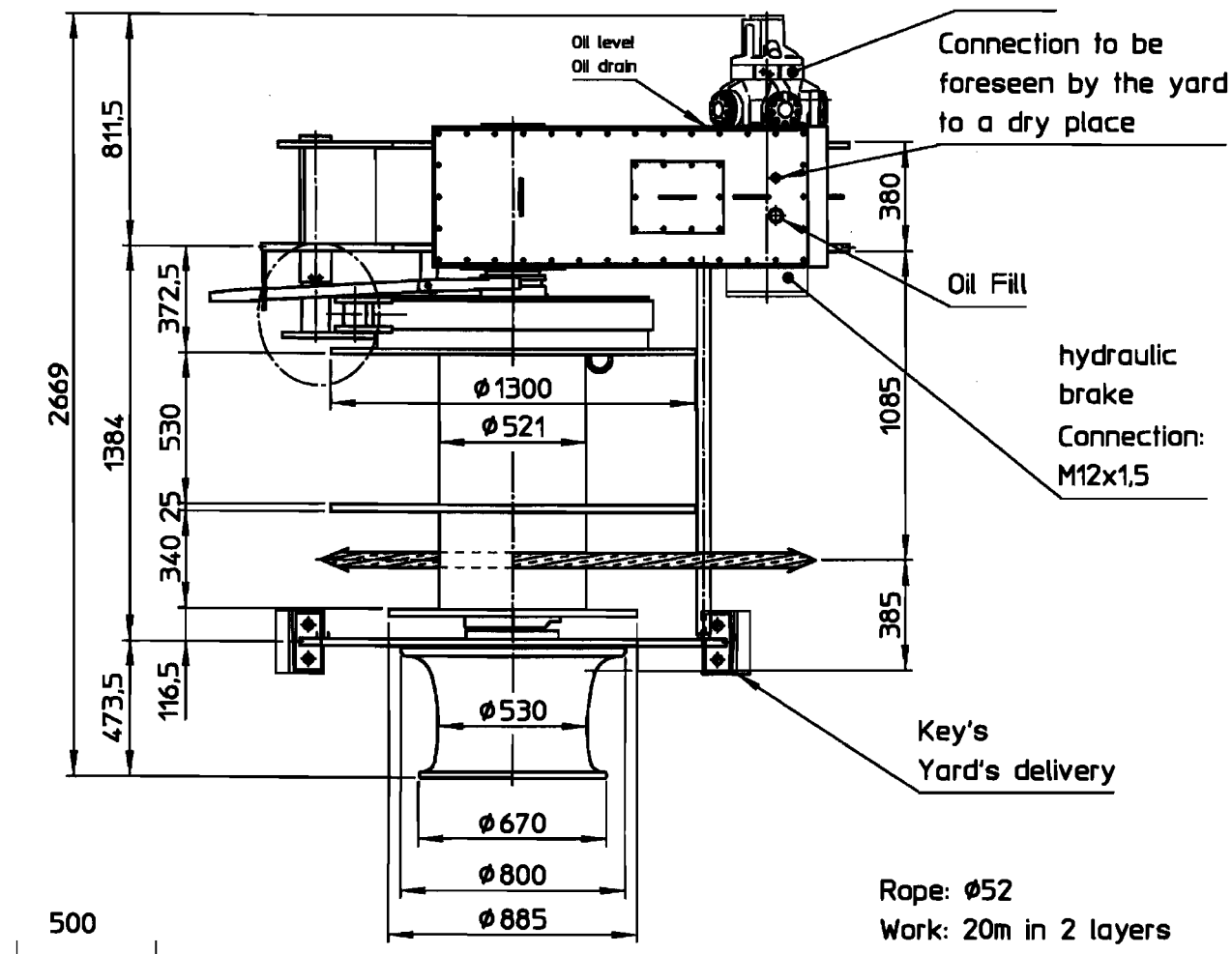
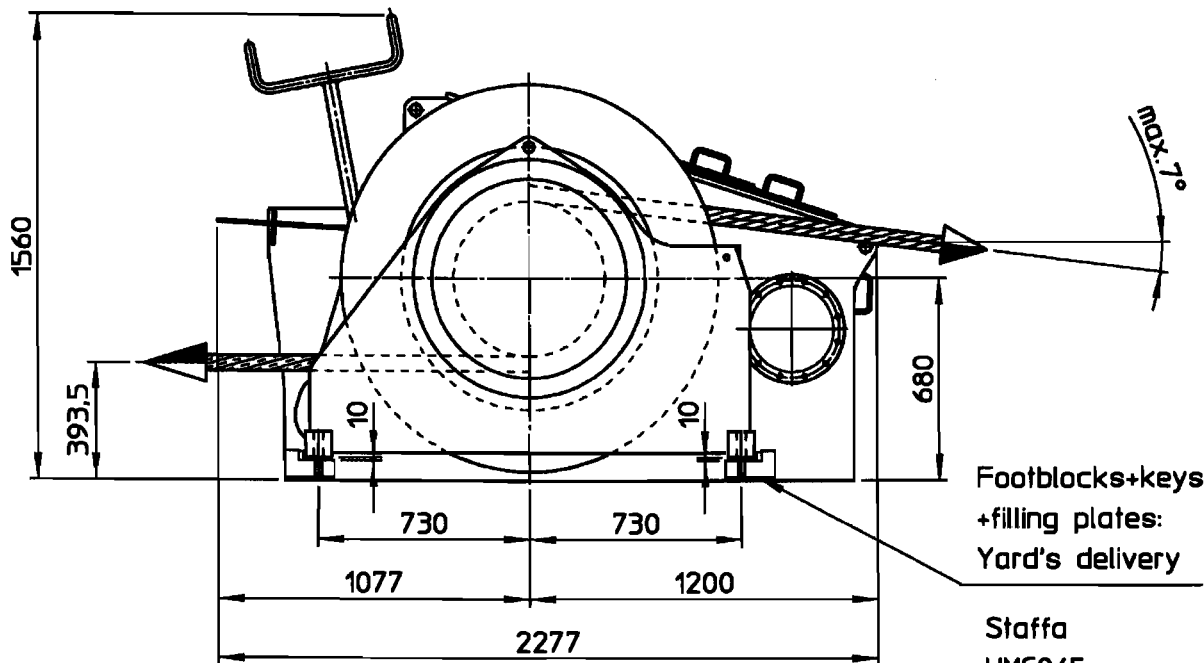
Tenwolde Transport
en Repair B.V.

P.O. Box 5023
3274 ZJ Heinoord
the Netherlands

Tel: +31(0)186-603333
Fax: +31(0)186-603619
info@tenwolde.com

Visiting address:
Boonsweg 19
3274 LH Heinoord
the Netherlands





Rope: $\varnothing 52$
 Work: 20m in 2 layers
 Storage: 130m in 6 layers

REV	DESCRIPTION	DATE	DRN	CHK
F	Text added "keys +filling plates, yard's delivery"	09/10/2009	B.D.	
E	No changes	27/03/2009	B.D.	
D	Definitive drawing + page added	20/11/2008	B.D.	
C	Position of motor and brake changed	12/11/2008	B.D.	

Hydraulic driven mooring Winch Type MO 15/1S-1

Dat: 06-10-2008
 Scale: 1/25 B.D.

BRUSSELLE MARINE INDUSTRIES N.V.
 Nieuwpoort Belgie

26257

Page 1
 2 pages